

## XMF ColorPath: Overview

# Cloud-based colour management for offset and digital printing

Fujifilm's cloud-based total colour management system allows printers to create colour profiles and calibrations to print to various standards, and provides tools to ensure that over time the standards are continually adhered to.

### Key features

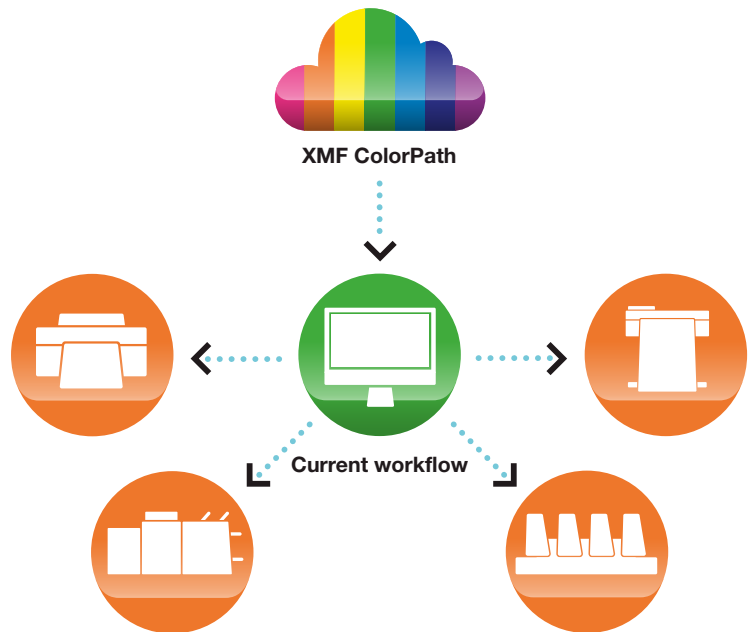
- ▶ Cloud based colour management
- ▶ Align offset and digital presses to ISO or G7 standards
- ▶ Optimise ink usage while maintaining conformance to ISO and G7 standards
- ▶ Create colour profiles to allow for FOGRA standard proofing
- ▶ Verify if digital proofs are within the tolerance limits of industry standards



# Quick and easy implementation of colour to ISO and G7 standards

**Colour management is essential in any successful print operation whether conventional, digital, or a combination of both. ColorPath® SYNC™ is a high-quality cloud-based, colour management solution, which enables even novice users to quickly and easily implement colour to ISO standards.**

ColorPath SYNC can be used with many existing workflows or fully integrated with Fujifilm's XMF Workflow. ColorPath SYNC is built on an easy-to-use web platform that utilises a simple step-by-step interface. The user interface provides one location to manage colour for multiple output devices, media, and workflows.



## Colour Management in the Cloud

ColorPath SYNC is cutting edge cloud based technology. Any web-connected computer can become a ColorPath SYNC portal. ColorPath SYNC connects directly to a spectrophotometer without the need for an additional application. Being a cloud-based application, ColorPath SYNC is always up to date and there is no requirement for cumbersome dongles or servers to be maintained.

## ColorPath® SYNC™ Align

ColorPath SYNC Align quickly creates optimised ISO & G7 alignment curves. These curves can be imported directly into most workflows, requiring no manual data inputs. It has the ability to work with smaller colour patch charts which cut measuring time drastically. ColorPath's cloud-based servers enable quick re-targeting for multiple print conditions, reducing the number of iterations required to optimise a desired press curve.

- ▶ Create optimised G7 & ISO alignment curves
- ▶ Quick re-targeting for multiple print conditions

## ColorPath® SYNC™ DLP

The ideal solution for proofers and digital presses, ColorPath SYNC DLP creates high quality, optimised, colour-managed device link profiles that plug into the existing workflow. This method of colour management ensures files are not reprocessed outside of the workflow, eliminating problems with document degradation. It has intelligent presets unique to each device it supports, eliminating the need for an operator to remember complex colour settings. It can be used to align devices to industry standards and print specifications such as ISO, FOGRA, GRACoL and SWOP. The ability to work with smaller colour patch charts drastically cuts measuring time.

- ▶ Colour manage proofers and digital presses
- ▶ High quality optimised device link profiles

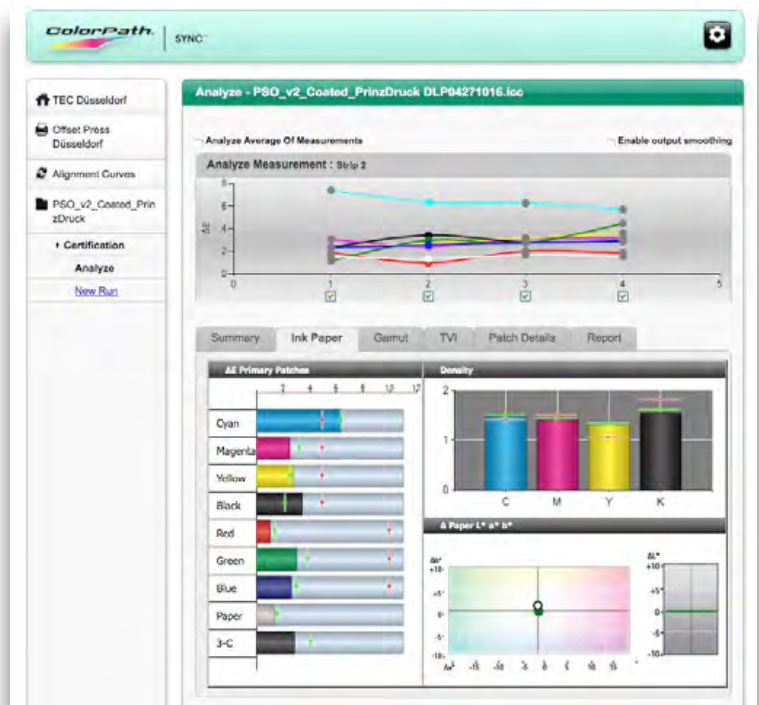


**XMF ColorPath**

## ColorPath® Validation solution

ColorPath Validation offers the ability to determine if a colour managed device is still within tolerance of the desired target. ColorPath Validation uses a small chart that is quickly measured to provide a simple pass/fail reading. Validation readings can be output to a label indicating the results of the measurement. ColorPath Validation is fully integrated with ColorPath SYNC DLP for ease of use, and for reducing operator error. If measurements are out of tolerance, ColorPath SYNC DLP can quickly be launched to re-profile the device. Since ColorPath Validation Tools are cloud-based, measurements can be read and reviewed from any web-connected computer. Validation reports can be output to view details of individual measurements, or to track measurements over time.

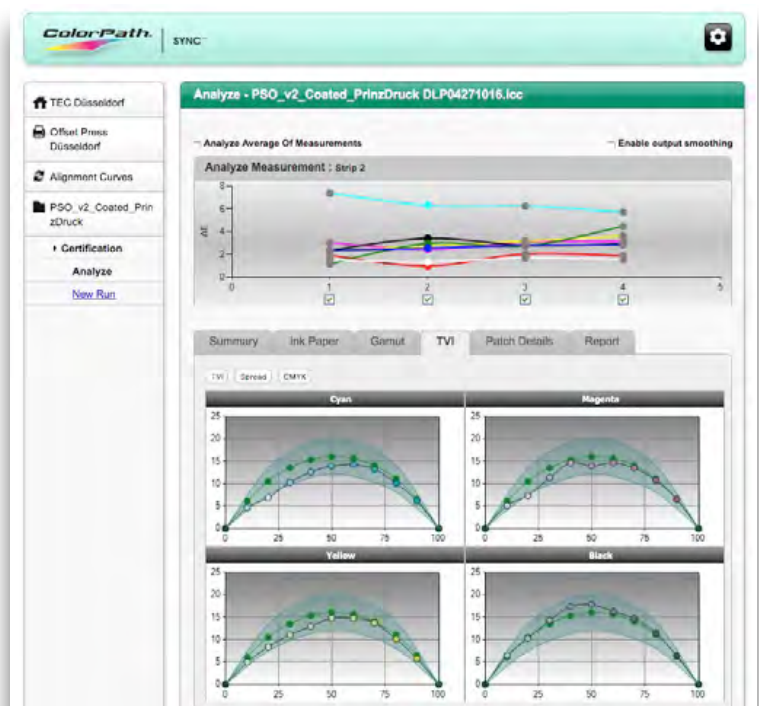
- ▶ Pass/Fail validation for industry targets
- ▶ Fully Integrated with ColorPath SYNC DLP



*XMF ColorPath provides an at-a-glance view of key colour parameters such as ink density, delta-E values for primary colours and stock and their variation over time.*

## ColorPath® SYNC™ Ink Optimisation (IO)

Ink optimisation can enhance and improve an already successful process colour print manufacturing process. Not only does ColorPath SYNC IO reduce ink usage, but it can also improve print consistency and stabilize print runs. These features can help improve make-ready time and reduce waste. ColorPath SYNC IO also improves grey balance which is a perfect fit for printers that have, or are looking to G7-align their presses. The ink reduction that occurs using ColorPath SYNC IO reduces ink offsetting and drying times whilst maintaining quality at higher run speeds.



*Alignment to ISO 12647-2 involves comparing measured TVI values against the standard. New curves can be generated and downloaded on-the-fly if tolerances are not being met.*

## Fully customisable solution

With the array of solutions ColorPath SYNC offers, a bundle can be completely customized to fit the individual needs of the printing operation. Bundling ColorPath SYNC Align and SYNC DLP can enable the flexibility of load balancing between digital and offset equipment to produce tightly-aligned colour output. - Ink optimisation for the press room.

- ▶ Improves print consistency and grey balance

## Prerequisites

- ▶ 1 Mbps or faster Internet connectivity
- ▶ Port 80 open
- ▶ Javascript

## Browser support

- ▶ Mac OS X 10.6.8 or higher
- ▶ Most current version of Firefox
- ▶ Windows 7 or higher

## Spectrophotometers supported

- ▶ XRite i1 Pro
- ▶ XRite i1 Pro 2
- ▶ XRite i1 iO
- ▶ XRite iSis
- ▶ XRite eXact (Sync Align)



### For further information:

Please contact your local Fujifilm partner.

**web** [www.fujifilm.eu/print](http://www.fujifilm.eu/print) **YouTube** Fujifilm Print **Twitter** @FujifilmPrint

Specifications are subject to change without notice. The name FUJIFILM and the FUJIFILM logo are trademarks of FUJIFILM Corporation. All other trademarks shown are trademarks of their respective owners. All rights reserved. E&OE.

**FUJIFILM**